

North Devon Link Road – NDLR – A361 (Portmore to Borners Bridge)

Traffic Bulletin – 28.05.24

GRIFFITHS

As we are nearing the end of the project, we are having to add some additional closures to our programme and this is why we are sending out more frequent bulletins advertising these changes. Our sub contractors are utilizing the closures to maximise the work that is required to complete the project. Majority of our closures are through the night Monday to Friday however we do require some night time weekend closures that are listed in the bulletin.

From 03.06.24 to 23.06.24 on various dates, - The A361 / North Devon Link Road will be closed at night from 8pm to 6am between North Aller Roundabout and Landkey Roundabout for various works.

Please see below for the schedule and diversion map on page 2 of this bulletin.

We apologise for any inconvenience.

Landkey Roundabout to North Aller Roundabout

Start Day / Date	Finish
Mon: 03.06.24 - 8pm	Tues: 04.06.24 - 6am
Tues: 04.06.24 - 8pm	Wed: 05.06.24 - 6am
Wed: 05.06.24 - 8pm	Thur: 06.06.24 - 6am
Thur: 06.06.24 - 8pm	Fri: 07.06.24 - 6am
Fri: 07.06.24 - 8pm	Sat: 08.06.24 - 6am
Start Day / Date	Finish
Mon: 10.06.24 - 8pm	Tues: 11.06.24 - 6am
Tues: 11.06.24 - 8pm	Wed: 12.06.24 - 6am
Wed: 12.06.24 - 8pm	Thur: 13.06.24 - 6am
Thur: 13.06.24 - 8pm	Fri: 14.06.24 - 6am
Fri: 14.06.24 - 8pm	Sat: 15.06.24 - 6am
Start Day / Date	Finish
Mon: 17.06.24 - 8pm	Tues: 18.06.24 - 6am
Tues: 18.06.24 - 8pm	Wed: 19.06.24 - 6am
Wed: 19.06.24 - 8pm	Thur: 20.06.24 - 6am
Thur: 20.06.24 - 8pm	Fri: 21.06.24 - 6am
Fri: 21.06.24 - 8pm	Sat: 22.06.24 - 6am
Sat: 22.06.24 - 8pm	Sun: 23.06.24 - 6am
Sun: 23.06.24 - 8pm	Mon: 24.06.24 - 6am

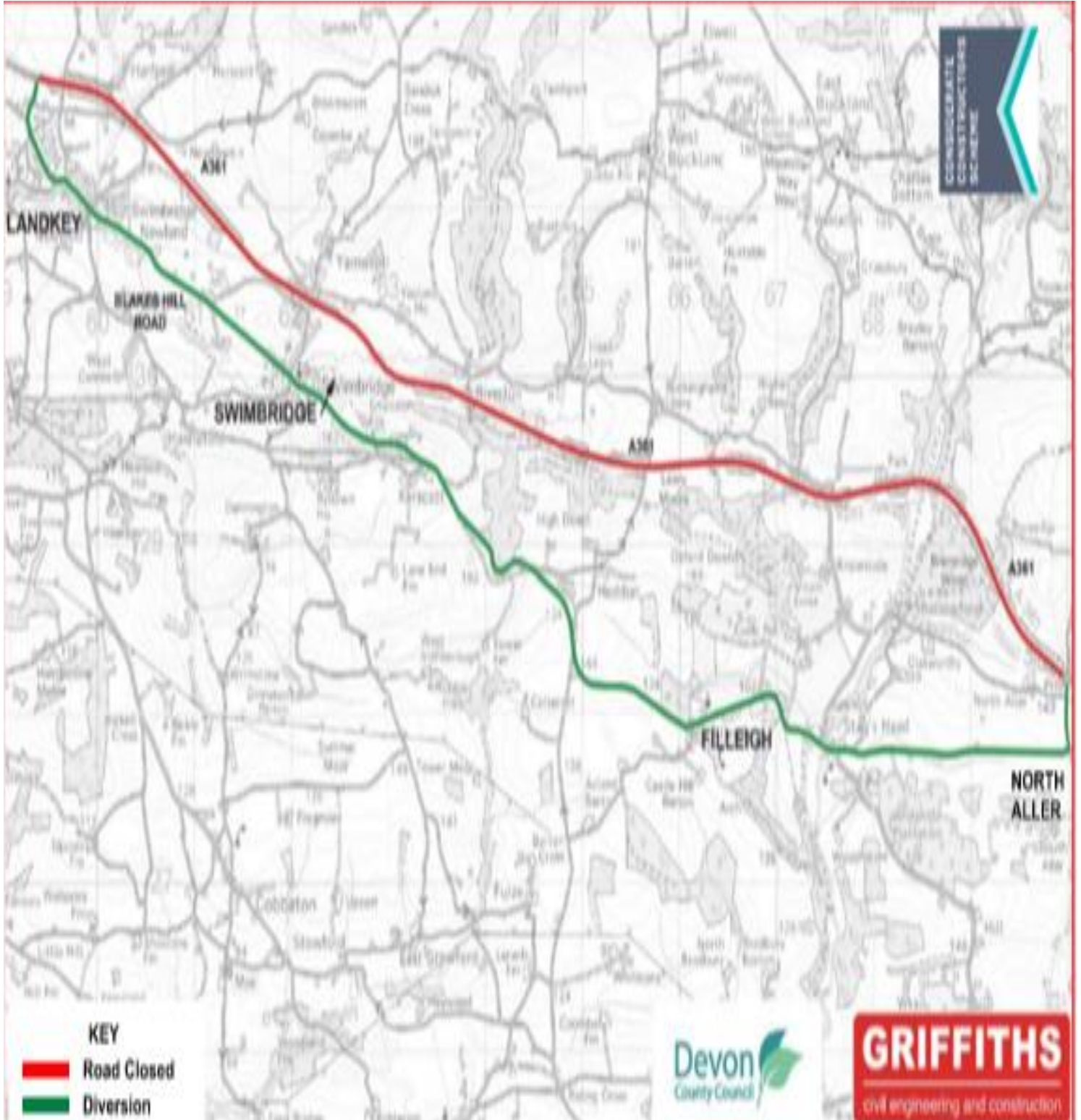
CONSIDERATE
CONSTRUCTORS
SCHEME

**North Devon Link Road – NDLR – A361
(Portmore to Borners Bridge)
Traffic Bulletin – 28.05.24**

GRIFFITHS

CONSIDERATE
CONSTRUCTORS
SCHEME

Landkey Roundabout to North Aller Roundabout



North Devon Link Road – NDLR – A361 (Portmore to Borners Bridge) Traffic Bulletin – 28.05.24



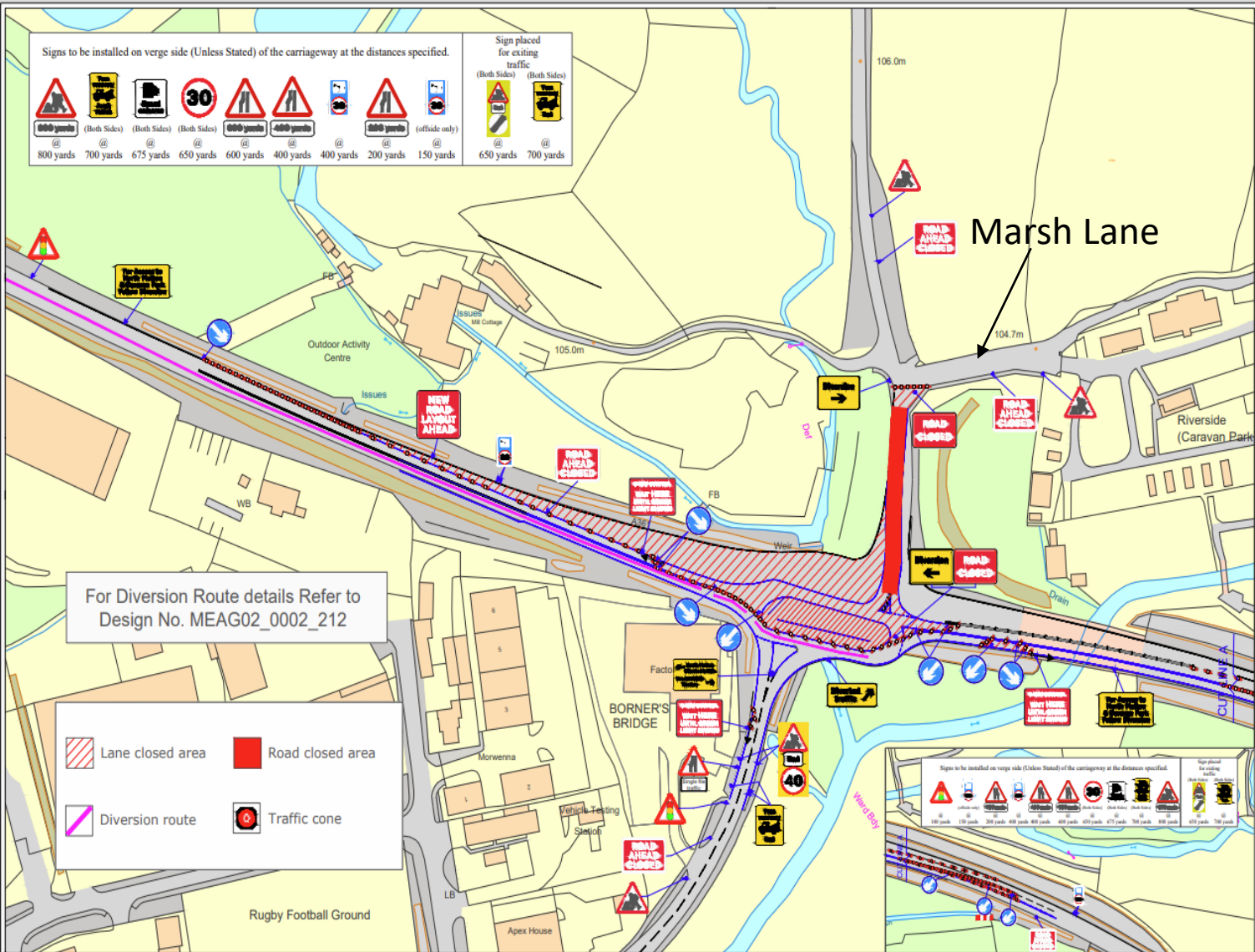
Borners Bridge - A361 North Molton Spur Road Closure

The road to North Molton from the A361 at Borners Bridge will be closed on various nights (Listed below) on 10.06.24 to 13.06.24 between Marsh Lane and A361 for essential works. 10pm to 6am. There will also be 3 x Way Traffic Lights, A361 East & West Bound, including Station Rd, from 10pm – 6am. The diversion route is on page 4 of this bulletin. We apologise for any inconvenience.

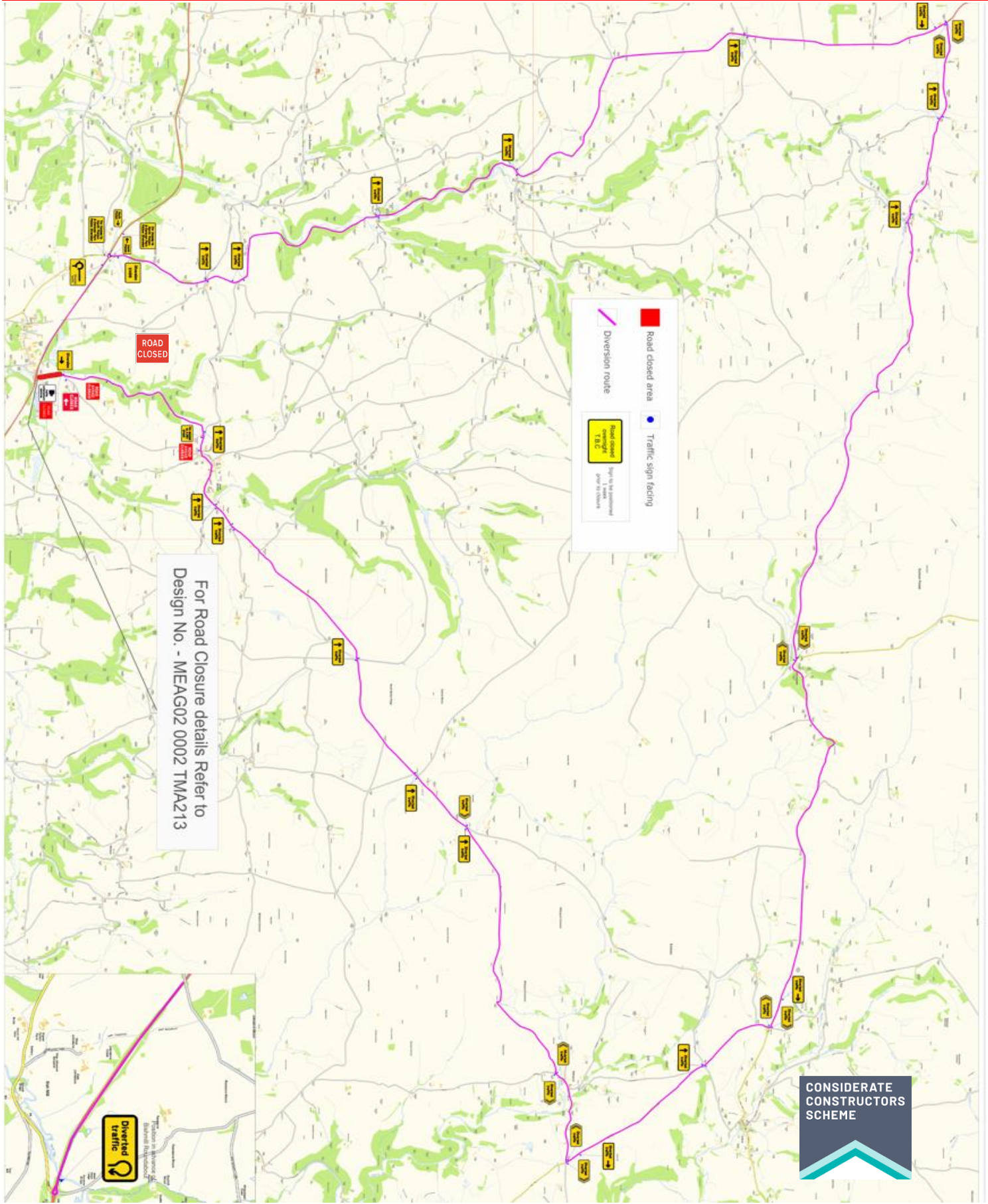
For all Traffic related matters 24/7 call Traffic Safety Control Officer (TSCO)
Tel: 07889 225393*
Your Public Liaison Officer for the NDLR is Rebecca Edmondson of Griffiths. She can be contacted:
E: NDLR@alungriffiths.co.uk
T: 0330 041 4637*
Calls are monitored out of normal work hours and a voicemail facility is available. Please check out our project website : community.alungriffiths.co.uk
If you would like to subscribe to receive future Newsletters and Bulletins, please click [HERE](#) and complete the online form for Mail Chimp. OR use this QR code:

Day / Date	Start	Finish
Mon: 10.06.24	10pm	Tues: 11.06.24 - 6am
Tues: 11.06.24	10pm	Wed: 12.06.24 - 6am
Wed: 12.06.24	10pm	Thur: 13.06.24 - 6am
Thur: 13.06.24	10pm	Fri: 14.06.24 – 6am

Borners Bridge- A361 - North Molton Spur Road Closure



Borners Bridge - A361 North Molton Spur Road Closure - Diversion



**North Devon Link Road – NDLR – A361
(Portmore to Borners Bridge)
Traffic Bulletin – 28.05.24**



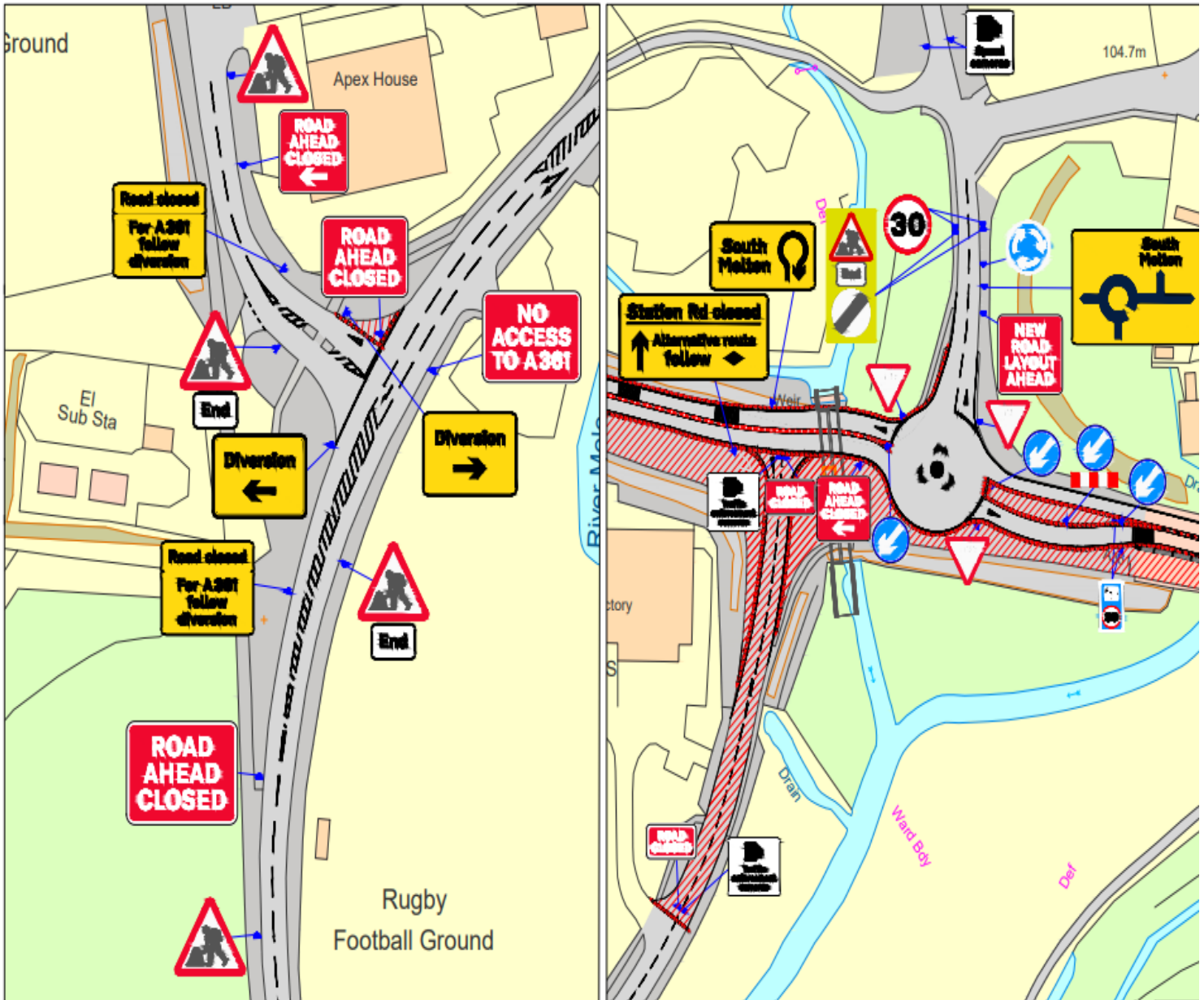
24Hr Closure – Station Road – June 2024

Road closure at Station Rd South Molton is required for the Installation of final surface course and sign installation.

Station Road Diversion route on Page 6

Day / Date	Start	Finish
Fri: 14.06.24	22.00 pm Closed 24 Hours	Mon: 17.06.24 – 05.00 am Re-Opens

Station Road Closure Map



**North Devon Link Road – NDLR – A361
(Portmore to Borners Bridge)
Traffic Bulletin – 28.05.24**

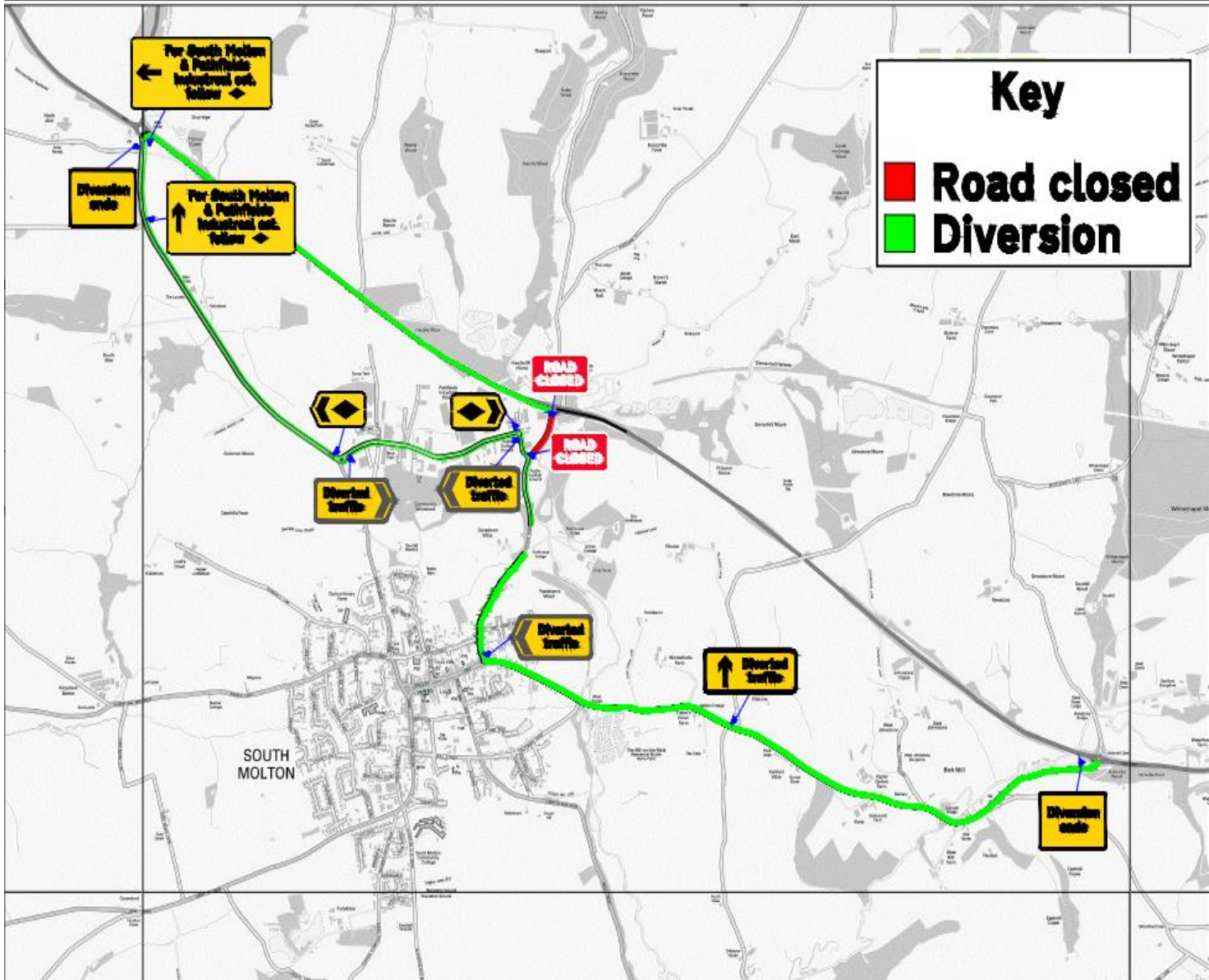


24Hr Closure – Station Road – June 2024

Road closure is required for the Installation of final surface course and sign installation.
Station Road Diversion route.

Day / Date	Start	Finish
Fri: 14.06.24	22.00 pm Closed 24 Hours	Mon: 17.06.24 – 05.00 am Re-Opens

Station Road Diversion route



Further Bulletins will be issued regularly to give more details and confirm dates



**North Devon Link Road – NDLR – A361
(Portmore to Borners Bridge)
Traffic Bulletin – 28.05.24**

GRIFFITHS

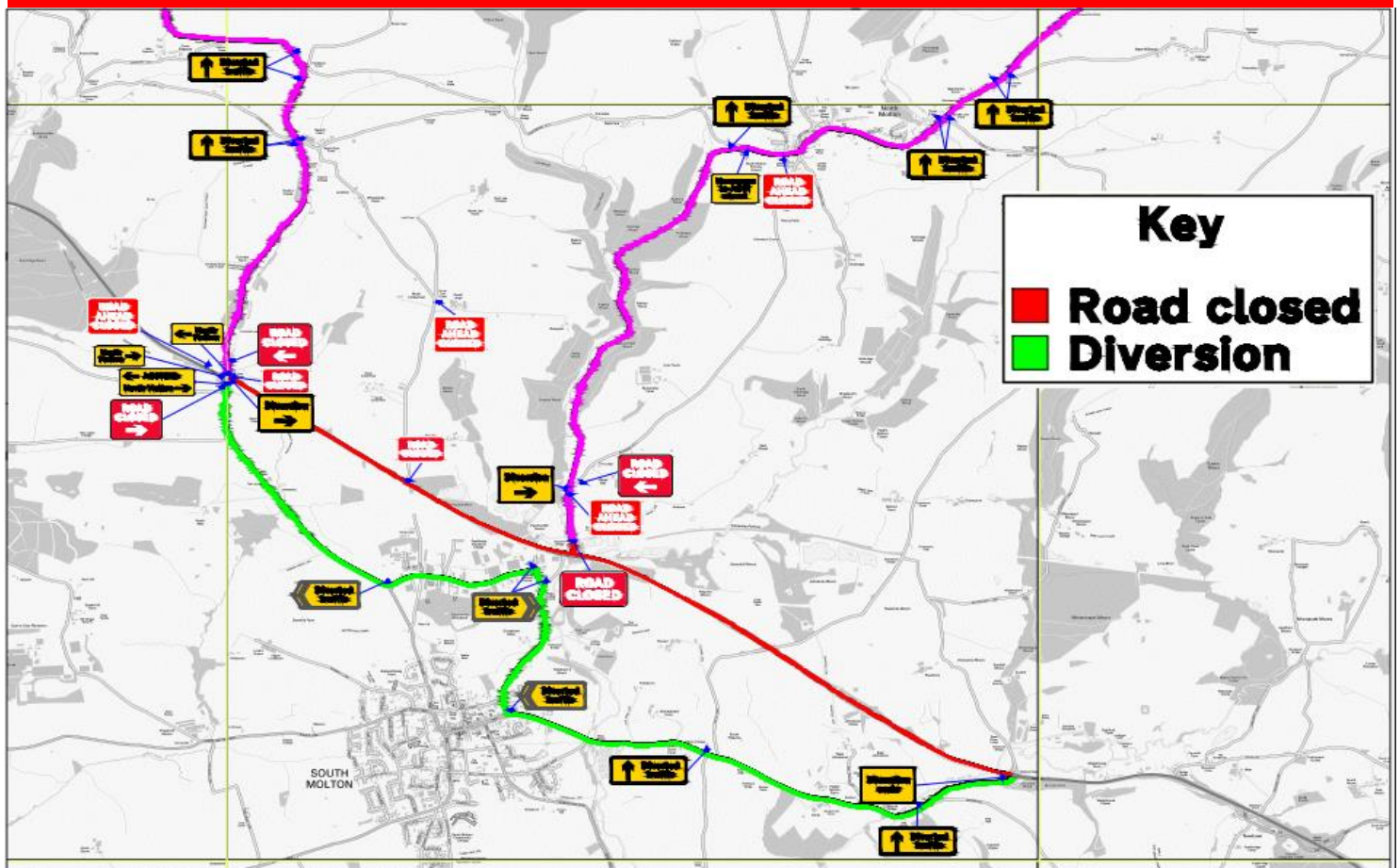
Night Closures – Bishmill to North Aller – June 2024

A full carriageway closure of the A361 between Bishmill & North Aller, including Station Rd and North Molton Spur Closure. The closure is required for the Installation of final surface course and other works between Bishmill and North Aller.

Diversion routes for Station Rd & North Molton on page8

Day / Date	Start	Finish
Mon: 24.06.24	10pm	Tues: 25.06.24 – 6am
Tues: 25.06.24	10pm	Wed: 26.06.24 - 6am
Wed: 26.06.24	10pm	Thur: 27.06.24 - 6am
Thur: 27.06.24	10pm	Fri: 28.06.24 - 6am
Fri: 28.06.24	10pm	Sat: 29.06.24 - 6am

Diversion route – Bishmill to North Aller



Further Bulletins will be issued regularly to give more details and confirm dates



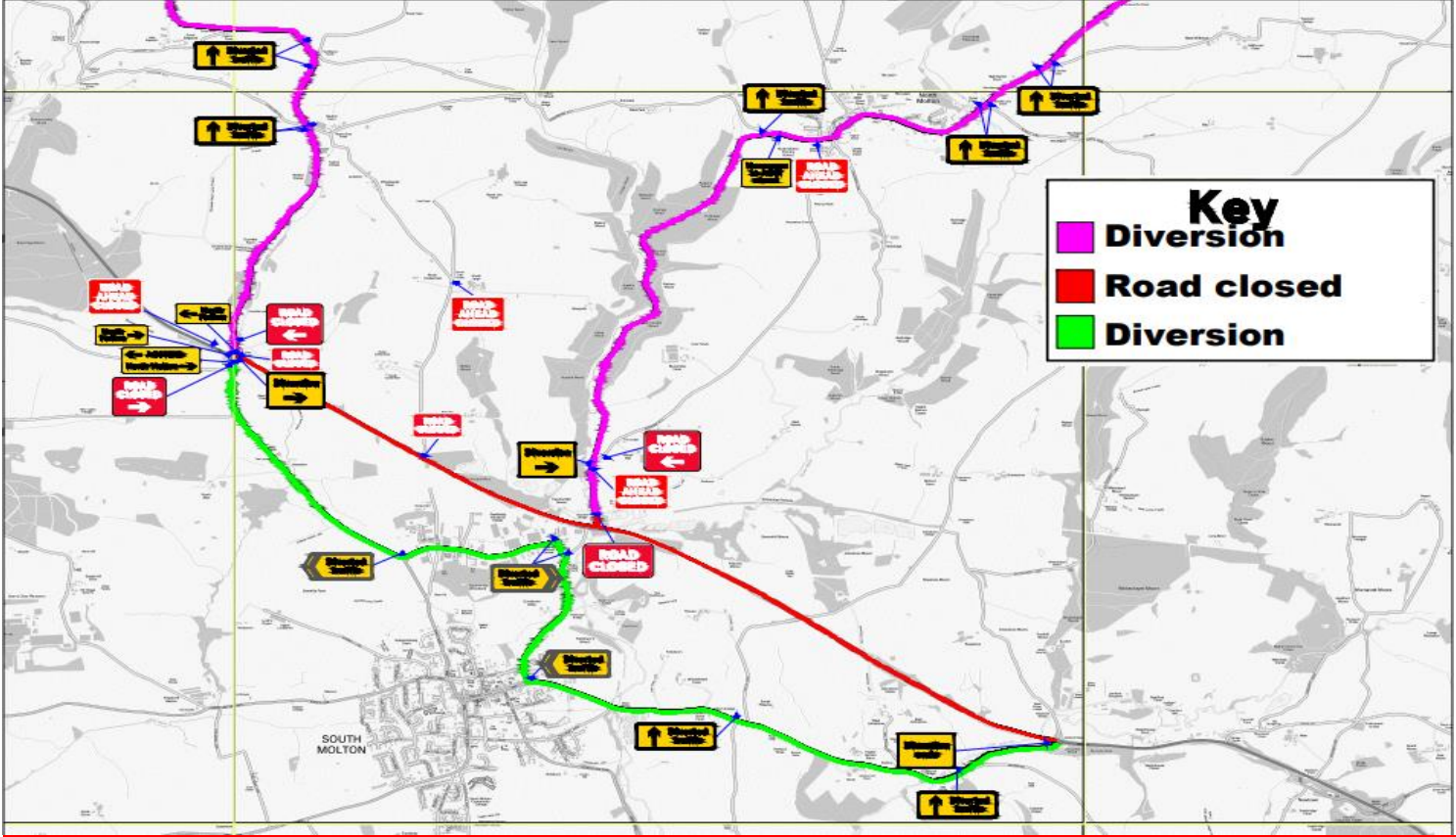
GRIFFITHS



North Devon Link Road – NDLR – A361
(Portmore to Borners Bridge)
Traffic Bulletin – 28.05.24



Diversion route – North Molton



Diversion route – Station Road

